

Hudik



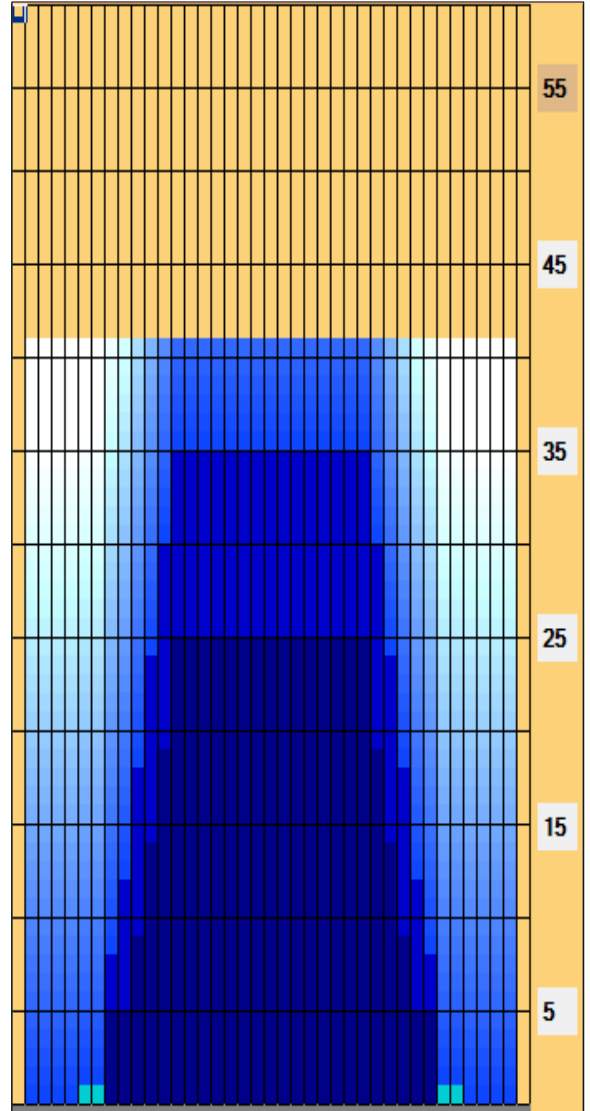
Oil Pattern Distance: 41 Feet **Reverse Brush Drop:** 41 Feet **Oil Per Board:** 50 uL
Forward Oil Total: 13 mL **Reverse Oil Total:** 14.75 mL **Volume Oil Total:** 27.75 mL
Forward Boards Crossed: 260 Boards **Reverse Boards Crossed:** 295 Boards **Total Boards Crossed:** 555 Boards

| | Start | Stop | Loads | Speed | Crossed | Start | End | Feet | T.Oil |
|---|-------|------|-------|-------|---------|-------|------|------|-------|
| 1 | 2L | 2R | 1 | 10 | 37 | 0.0 | 0.0 | 0.0 | 1850 |
| 2 | 6L | 6R | 1 | 14 | 29 | 0.0 | 1.9 | 1.9 | 1450 |
| 3 | 8L | 8R | 2 | 14 | 50 | 1.9 | 5.8 | 3.9 | 2500 |
| 4 | 10L | 10R | 2 | 14 | 42 | 5.8 | 9.7 | 3.9 | 2100 |
| 5 | 11L | 11R | 2 | 18 | 38 | 9.7 | 14.8 | 5.1 | 1900 |
| 6 | 12L | 12R | 2 | 18 | 34 | 14.8 | 19.9 | 5.1 | 1700 |
| 7 | 13L | 13R | 2 | 18 | 30 | 19.9 | 25.0 | 5.1 | 1500 |
| 8 | 2L | 2R | 0 | 30 | 0 | 25.0 | 41.0 | 16.0 | 0 |

| | Start | Stop | Loads | Speed | Crossed | Start | End | Feet | T.Oil |
|---|-------|------|-------|-------|---------|-------|------|------|-------|
| 1 | 2L | 2R | 0 | 30 | 0 | 41.0 | 35.0 | -6.0 | 0 |
| 2 | 13L | 13R | 2 | 18 | 30 | 35.0 | 29.9 | -5.1 | 1500 |
| 3 | 12L | 12R | 3 | 14 | 51 | 29.9 | 24.0 | -5.9 | 2550 |
| 4 | 11L | 11R | 3 | 14 | 57 | 24.0 | 18.1 | -5.9 | 2850 |
| 5 | 10L | 10R | 3 | 14 | 63 | 18.1 | 12.2 | -5.9 | 3150 |
| 6 | 9L | 9R | 3 | 10 | 69 | 12.2 | 8.0 | -4.2 | 3450 |
| 7 | 8L | 8R | 1 | 10 | 25 | 8.0 | 6.6 | -1.4 | 1250 |
| 8 | 2L | 2R | 0 | 10 | 0 | 6.6 | 0.0 | -6.6 | 0 |

Conditioner:
 Type In or Select One
 TransferType:
 Type In or Select One

- Forward
- Reverse
- Combined
- Buff



TRANSFER BRUSH SYSTEM Program #3

| Item | 3L-7L:18L-18R | 8L-12L:18L-18R | 13L-17L:18L-18R | 18L-18R:17R-13R | 18L-18R:12R-8R | 18L-18R:7R-3R |
|------------------|----------------------|---------------------|---------------------|----------------------|---------------------|----------------------|
| Description | Outside Track:Middle | Middle Track:Middle | Inside Track:Middle | Middle: Inside Track | Middle:Middle Track | Middle:Outside Track |
| Track Zone Ratio | 19.29 | 2.01 | 1 | 1 | 2.01 | 19.29 |

